

# ID Screen

## The ultimate biometric tablet



IDEMIA leverages on the field experience gained from multiple projects around the world to propose ID Screen, its third generation of multi-application biometric tablet, built upon the successes of its predecessors. ID Screen offers improved ergonomics yet with more power, connectivity and autonomy for all use cases enabled.



## Benefits



### Unique performances

ID Screen combines a powerful 2GHz Quad Core processor with latest Android 10.0 OS, with all connectivity capabilities and a strong battery, to enable efficient usage even in demanding environments.



### Best-in-class ergonomics

ID Screen's 8" portrait-format color touchscreen enables an intuitive handling and very comfortable grip, for more convenience and to fully take advantage of all embedded multi-application hardware features.



### Multifaceted

Thanks to its biometric capture capabilities, contact and contactless card readers for e-ID document reading and 8 megapixel camera with dual LEDs illumination, ID Screen is the most efficient solution for a variety of civil and corporate ID enrollment and verification use cases.

## Why IDEMIA?

With more than 40 years of experience in biometrics and over 4 billion fingerprints managed worldwide, IDEMIA gets top-tier performance in independent tests worldwide (such as NIST<sup>1</sup> evaluations) and is thus the undisputed leader in biometric technologies. Our algorithms and sensor technologies, combined with our end-product design and

manufacturing expertise, make us the partner of choice for most prestigious organizations.

IDEMIA's solutions, encompassing contact and contactless fingerprint, hybrid vein/print and facial recognition readers, have been deployed in more industries and tougher environments than any other vendors' solutions.

<sup>1</sup> National Institute of Standards and Technology



**A powerful all-in-one multi-application biometric tablet to efficiently support the most demanding use cases on the field**



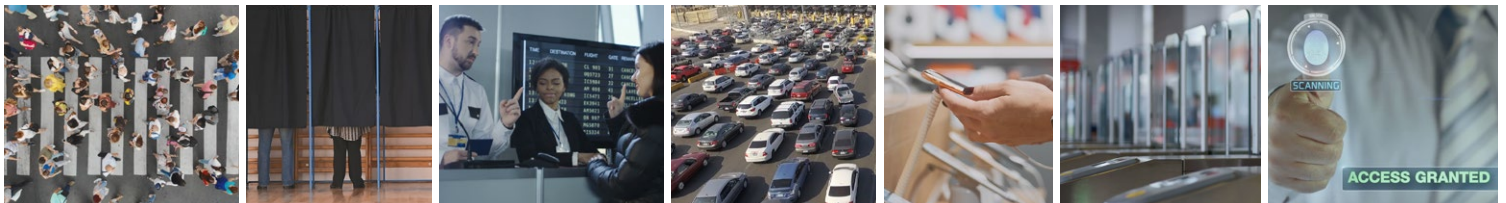
**ID Screen is well suited to support a great variety of use cases:**

**For governments**

- › citizen registration
- › voter verification
- › identity verification at borders
- › ID document checks

**For enterprises**

- › eKYC / client on-boarding
- › access control
- › time & attendance



**Technical specifications**

› **Powerful CPU**

Quad Core 2GHz processor

› **Operating system**

Android 10.0 (Q)  
GMS certified as option

› **Powerful battery**

Li-ion Polymer, 5000 mAh

› **High definition color touchscreen**

8" (1280 x 800)

› **Optical fingerprint sensor**

IDEMIA CBM E3  
FBI PIV IQS & STQC certified

› **Smartcard readers**

Contactless ISO/IEC 14443 A/B

Contact ISO 7816 A/B/C

› **Memory**

2GB RAM, 16GB Flash  
Option for 3GB / 32GB  
Micro-SD up to 256GB

› **Cameras**

Front 2MP /  
Back 8MP autofocus  
Dual flash

› **Network/Communication**

Wi-Fi 802.11 ac/b/g/n

Bluetooth 5.0

Dual micro-SIM  
4G: B1/B2/B3/B4/B5/B7/B8/  
B20/B28/TDD38/TDD B40  
3G: B1/B2/B5/B8

› **USB ports**

USB host type A + Micro-USB type C

› **Localisation**

GPS, A-GPS, Glonass, Galileo

› **Charge**

DC in charger (incl. 3 plugs)

› **Operating conditions**

Temperature: 0° to +50°C (14° to 131°F)

Humidity: 10 to 90% (non condensing)

› **HxWxD**

234.5x133x17 mm / 9.25x5.2x0.67 in

› **Weight**

580g / 1.26lbs

› **Certifications**

CE, CB, FCC, RoHS, REACH and WEEE

› **Accessories**

Silicon protective sleeve, passive stylus